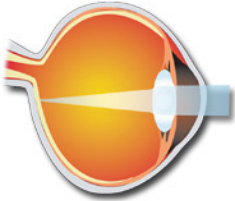


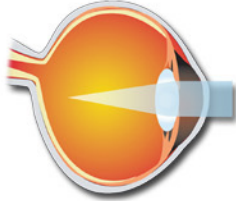
REFRACTIVE ERRORS

Normal Eye



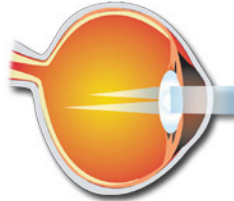
Light rays focus on the retina

Myopia



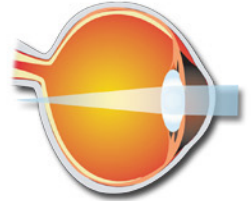
Light rays focus in front of the retina

Astigmatism



Light rays focus on more than one point (unequal refraction of light in different meridians)

Hypermetropia



Light rays focus behind the retina

Myopia



Normal vision



Vision of a Myopic patient

What is at the back?

You are able to see clearly the objects which are close to you. But what about those at a distance? Are they hazy? This condition wherein distant objects appear hazy is called myopia. This can be corrected with spectacles with concave lenses or contact lenses.

Astigmatism



Normal vision



Vision of Astigmatic patient

Oh! Such a distorted face!

Objects appear distorted to you while others see them straight. You might have an error in one particular axis alone leading to distortion of images. You can get it corrected with spectacles.



Normal vision



Vision of Hypermetropia patient

Hypermetropia

Do you see distant objects clearly than near objects?

You have Hypermetropia. You can wear spectacles with convex lenses and see objects equally well at near distance.

